

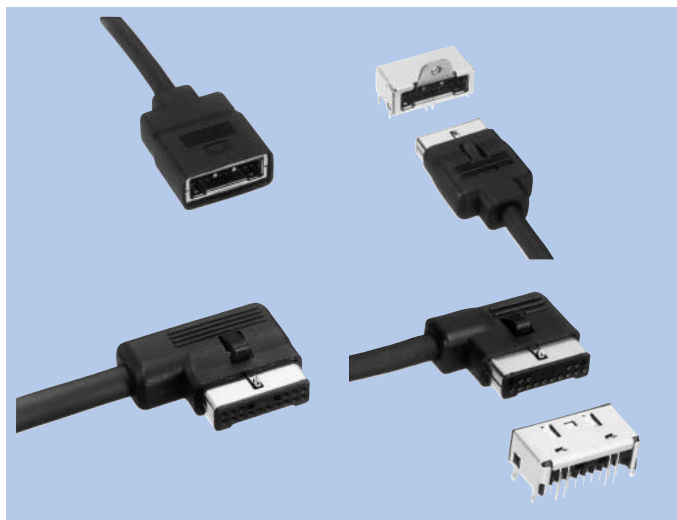
Rectangular Connectors

IAM-A26, B12, A61, A79, CAM-A62, CP-M01, Series

Connectors

FEATURES

1. IAM-A26 and B12 series are angle type rectangular connectors of 14 and 16 pins. IAM-A61, A79, and CAM-A62 series are straight type rectangular connectors of 14 and 16 pins.
2. These connectors are equipped with a "one-touch" lock device and guide pins for preventing wrong insertion of connector and for protecting terminal.
3. The inside and outside of these connectors are shielded, and they are compatible with CP-M01 series connectors.
4. The connectors are also applicable for extension use. (IAM-A79)
5. Highly durable connectors that have the coupling/decoupling cycle life of 5,000 times are available. (This type of the connector is only available in IAM-B12 series connectors with 16 pins.)



HOW TO ORDER

1. IAM-A26 Series

A26 - -

1 2 3

- 1 Series No.
- 2 No. of contacts
(014 : 14pins, 016 : 16pins)
- 3 Product Specifications
(0853A : 14pins, 1584A : 16pins)

2. IAM-B12 Series

B12 - -

1 2 3

- 1 Series No.
- 2 No. of contacts
(014 : 14pins, 016 : 16pins)
- 3 Product Specifications
(1464A : 14pins, 1615A : 16pins)

3. IAM-A61 Series (Cable Ass'y)

A61 - -

1 2 3

- 1 Series No. (A61)
- 2 No. of contacts
(014 : 14pins, 016 : 16pins)
- 3 Product Specifications
(0852A : 14pins, 1847A : 16pins)

4. IAM-A79 Series

A79 - -

1 2 3

- 1 Series No.
- 2 No. of contacts
(014 : 14pins, 016 : 16pins)
- 3 Product Specifications
(0854A : 14pins, 1837A : 16pins)

5. CAM-A62 Series (PCB Mount Type)

A62 - -

1 2 3

- 1 Series No. (A62)
- 2 No. of contacts
(014 : 14pins, 016 : 16pins)
- 3 Product Specifications
(1869B : 14pins, 8710A : 16pins)

6. CP-M01 Series (PCB Mount Type)

M01 - -

1 2 3

- 1 Series No. (M01)
- 2 No. of contacts
(014 : 14pins, 016 : 16pins)
- 3 Product Specifications
(1452B : 14pins, 9177A : 16pins)

SPECIFICATIONS

ELECTRICAL CHARACTERISTICS

Rated Voltage	30V DC
Rated Current	1A
Withstanding Voltage	500V AC (rms) 1minute
Withstanding Voltage (CP-M01)	250V AC (rms) 1minute
Insulation Resistance	100MΩ min. (at DC 500V)
Insulation Resistance (CP-M01)	50MΩ min.
Contact Resistance	30mΩ max.

MECHANICAL CHARACTERISTICS

Life (Matching Cycle)	200 times
Total Insertion Force	49N (5kgf) max.
Total Withdrawal Force	3~49N (0.3~5kgf)
Using Temperature Range	-30~+85°C
Lock Strength (A26, B12)	49N (5kgf) min.

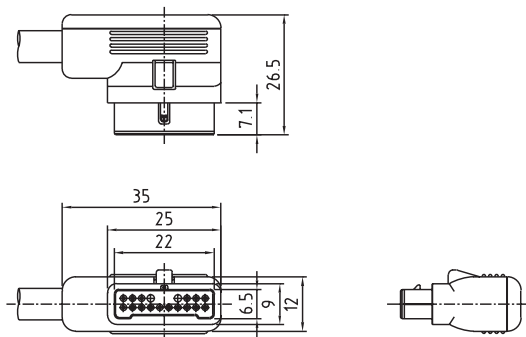
MATERIAL & FINISH

Component Parts		Material	Finish
IAM-A26 Series	Housing	PBT resin	—
	Contact	Copper Alloy	Tin reflow plating
	Upper Shielded Case	Steel	Nickel plating
	Lower Shielded Case	Steel	Nickel plating
	Cover	Glass filled PBT resin	("Shibo" process)
	Top Cover	Glass filled PBT resin	("Shibo" process)
	Lock	Copper Alloy	Nickel plating
	Cord Clamper	Aluminum	—
IAM-B12 Series	Housing	PBT resin	—
	Contact	Copper Alloy	Tin reflow plating
	Upper Shielded Case	Steel	Nickel plating
	Lower Shielded Case	Steel	Nickel plating
	Cover	Glass filled PBT resin	—
	Top Cover	Glass filled PBT resin	—
	Lock	Copper Alloy	Nickel plating
	Cord Clamper	Aluminum	—
IAM-A61 Series	Socket Housing	Glass filled PBT resin	—
	Socket Contact	Copper Alloy	Tin reflow plating
	Shielded Case A•B	Steel	Nickel plating
	Case	Glass filled PBT resin	("Shibo" process)

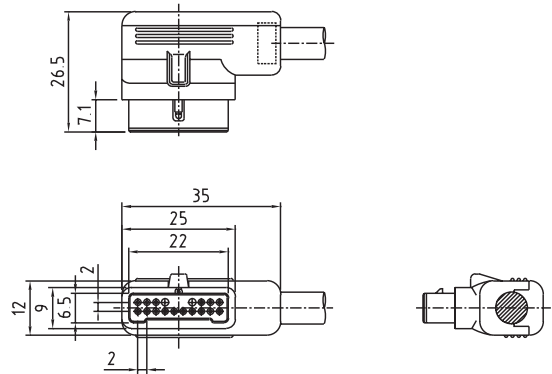
Component Parts		Material	Finish
IAM-A79 Series	Housing	Glass filled PBT resin	—
	Contact	Copper Alloy	Tin reflow plating
	Inner Shielded Case	Copper Alloy	Tin reflow plating
	Upper Shielded Case	Steel	Nickel plating
	Lower Shielded Case	Steel	Nickel plating
	Case	PBT resin	("Shibo" process)
	Guide Pin	Copper Alloy	Nickel plating
CAM-A62 Series	Plug Housing	Glass filled PBT resin	—
	Plug Contact	Copper Alloy	Tin reflow plating
	Inner Shielded Case	Copper Alloy	Tin reflow plating
	Outer Shielded Cover	Steel	Tin plating
	Guide Pin	Stainless	—
CP-M01 Series	Housing	Glass filled PBT resin	—
	Contact	Copper Alloy	Tin reflow plating
	Shielded Cover	Copper Alloy	Tin reflow plating
	Guide Pin	Stainless Steel	—

DIMENSIONS

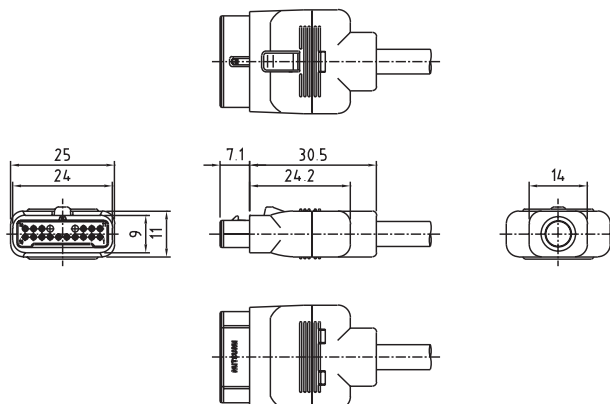
IAM-A26



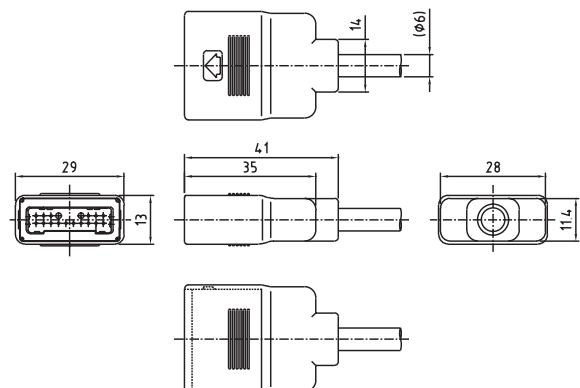
IAM-B12



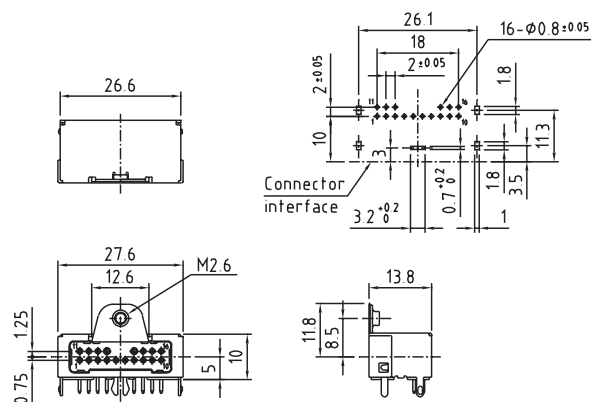
IAM-A61 Series



IAM-A79 Series



CAM-A62 Series



CP-M01 Series (14pins)

